

WILTSHIRE POLICE

# CPT Area Briefing

Salisbury Area Community Policing Team

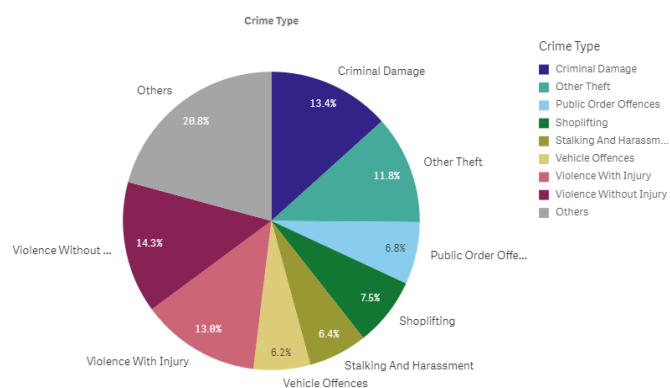


Proud to serve and protect our communities

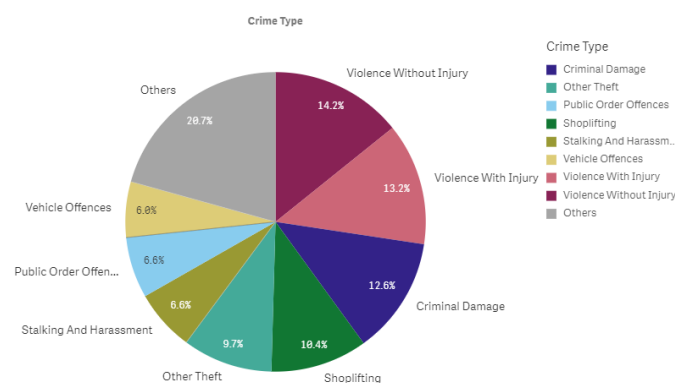
January/February 2020

## PERFORMANCE

Your Area - Five Highest Crime Groups (Previous 12 months)



Force Area - Five Highest Crime Groups (Previous 12 months)



Wiltshire South and South East CPTs - crime and incident demand for the 12 months to November 2019

## Force-wide

- Wiltshire Police has had an increase in the volume of recorded crime by 4.5% in the 12 months to November 19 and continues to have one of the lowest crime rates in the country.
- Our service delivery remains consistently good.
- In November, we received 8,234 999 calls which we answered within 5 seconds on average and 11,604 CRIB calls which we answered within 1 minutes 28 seconds on average.
- In November, we also attended 1,594 emergency incidents within 10 minutes and 30 seconds on average.
- Wiltshire Police has seen a 10% reduction in vehicle crime and 9% in residential burglaries in the 12 months to November 2019.
- The Crime Survey of England & Wales recently ranked Wiltshire as one of the top forces (78.3%) nationally for public confidence. It covers the 12 months to March 2019. The publication can be found here: [WWW.CRIMESURVEY.CO.UK](http://WWW.CRIMESURVEY.CO.UK)

For more information on Wiltshire Police's performance please visit:

PCC's Website - <https://www.wiltshire-pcc.gov.uk/article/1847/Performance>

HMICFRS Website - <https://www.justiceinspectorates.gov.uk/hmicfrs/police-forces/wiltshire/>

Police.uk - <https://www.police.uk/wiltshire>

WILTSHIRE POLICE

# CPT Area Briefing

Salisbury Area Community Policing Team

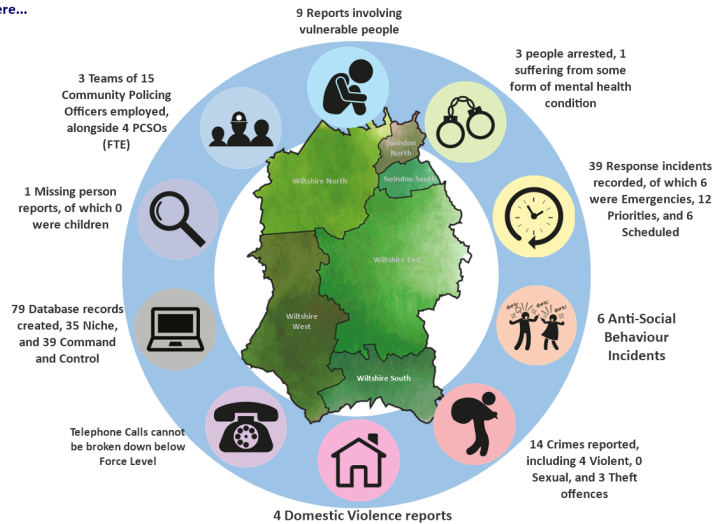


Proud to serve and protect our communities

January/February 2020

## Area specific Performance

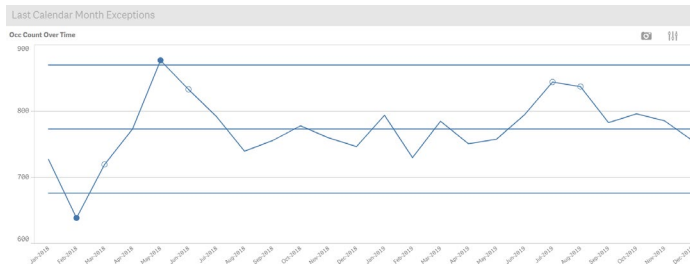
On an average day in Wiltshire South there were...



Wiltshire South / South East CPT Demand Overview – 12 months to November 2019

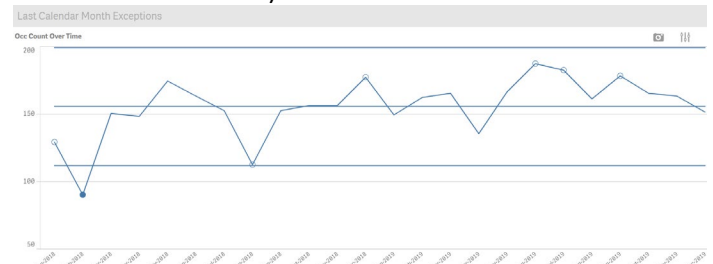
### Salisbury CPT Demand over 2 years:

No Exceptions but Burglary Business high for Dec(24) Ave 13.5.



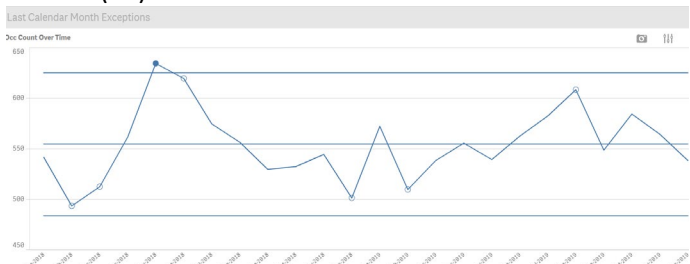
### Southern Area Board Demand over 2 years:

Exception: Short Term High in Possession of Drugs (Dec 5 offences – Ave 1.75)



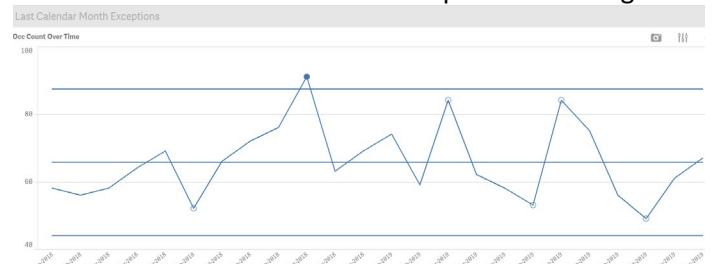
### Salisbury Area Board Demand over 2 Years:

Exception: Short Term High in Trafficking Drugs (5 offences in Dec – Ave 2.5)  
Not an exception but caution for Burglary Business high for Dec (18) Ave 8.1



### Wilton (SW Wilts Area Board) Demand over 2 years:

Exception: Bicycle Theft (Dec 3 offences – Ave 1.3)  
Caution - Small numbers can create peaks and troughs.



WILTSHIRE POLICE

# CPT Area Briefing

## Salisbury Area Community Policing Team



Proud to serve and protect our communities

January/February 2020

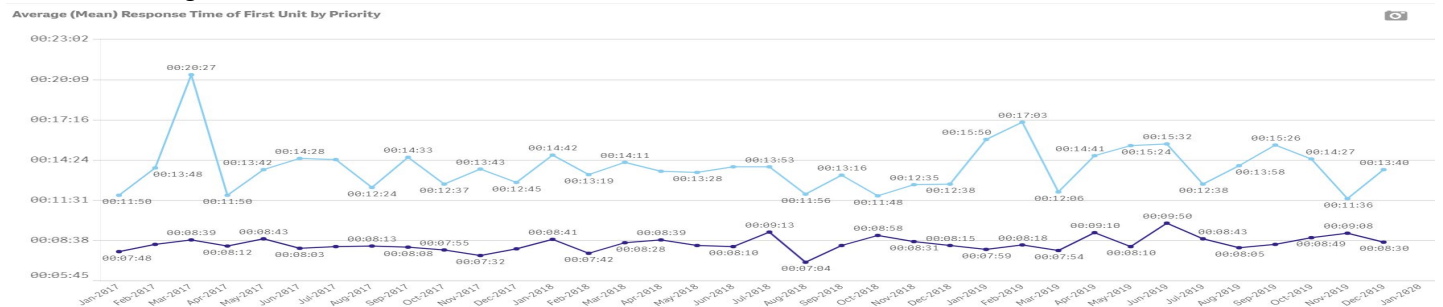
The ability to respond to immediate demand across our approx 300<sup>2</sup> miles in a timely manner when required is key to successful policing. Below are the last 3 years average Immediate response times, broken down to Area Board level.

### Response Times Salisbury CPT

— Immediate Urban (within 15 minutes standard)

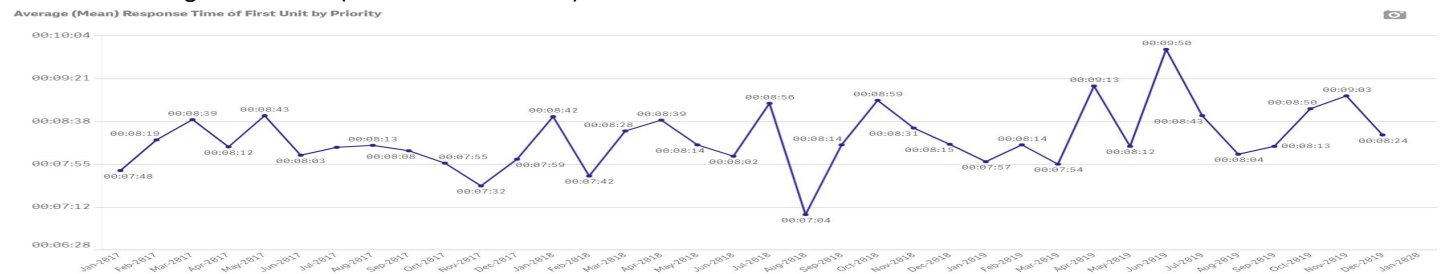
— Immediate Rural (within 20 minutes standard)

December averages: 08:30 min Urban / 13:40 min Rural



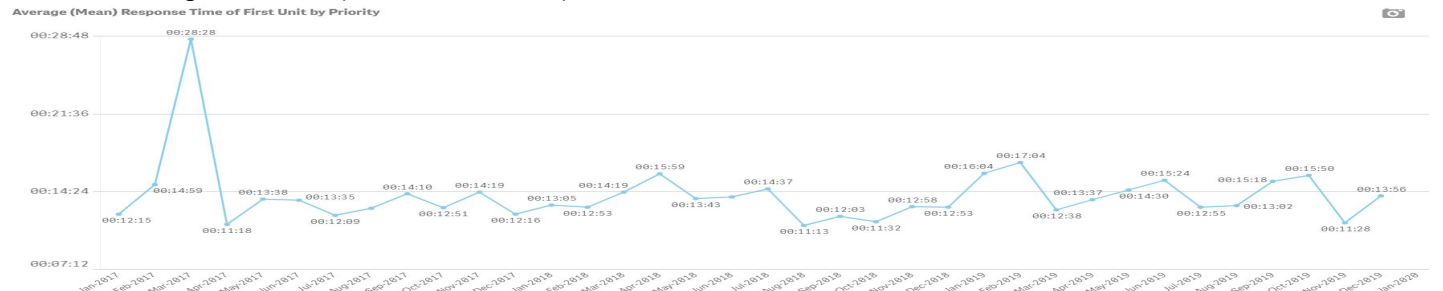
### Salisbury Area Board Beats

December average: 08:24 min (15 minutes Standard)



### Southern Area Board Beats

December average: 13:56 min (20 minute Standard)



### Wilton Area Board

December average: 13:05 min (20 minute Standard)



WILTSHIRE POLICE

# CPT Area Briefing

Salisbury Area Community Policing Team



Proud to serve and protect our communities

January/February 2020

## HIGH LEVEL CPT UPDATES:

**Operation Uplift:** Although we have yet to see the arrival of New Constables we have received 3 new PCSOs, Hannah Cranham, Grace Akers and Nicola Bird who are making themselves known on their new beat areas. Sadly, we have had to say goodbye to Kady Green who has relocated to start a new life outside of Policing and we will lose Harry Evans in February, who leaves to become a Constable. We look forward to watching his development.

Community Policing continues to evolve and we will build a team of Neighbourhood Officers, consisting of 2 Sgts, 4 PCs, and all our PCSOs. This team will continue to use our Problem Solving approach in order to analyse and identify concerns and resolve the matter, reducing demand across our communities. Details of the Team are below.

**Operation Hamper:** Recognising that Salisbury has a seasonal rise in reported theft and ASB, particularly around the City Centre, Op Hamper was introduced. This was intended to:

- Deny Space for offending – a high visible presence within the City
- Detect Offences at the time
- Deter Offenders from choosing to come to Salisbury to commit crime.

The operation relied upon Partnerships, making better use of the ShopWatch and PubWatch radio systems, linking the City CCTV and the Police to the Shops and Licenced Premises. Crime Prevention advice was key. Research shows that preventative measures used by shops before offences occur are far more effective than enforcement options after the event.

Result: We witnessed a rise in reported Shopliftings during November and early December, before a sharp fall in both Shoplifting and ASB during December. With 27 reported shopliftings in December (53 in November), only 2 had no recorded suspects making significantly higher detection rates.

This operation will continue in 2020 under the less seasonal name of **Op Vendor**.

**Cat Thefts:** We are experiencing an increase in catalytic converter theft/attempt thefts, particularly from 4x4 vehicles such as Landrover Freelanders and Honda CRVs. These vehicles are favoured as they provide easy clearance to get under the car, so some simple preventative advice can assist you:

Do not park with one wheel on the pavement.

If possible, park in a garage or off the road and in well-lit areas or under CCTV.

Use hard features, such as walls or fences to make it harder to get under your car.

Please report any suspicious people under vehicles to the police with as much detail as possible, including vehicles associated to them.

**Burglary in West Gomeldon:** Liam Lowrey (20) from Swindon was identified as the lookout for a burglary in June based on excellent CCTV images. Images on his own phone assisted with the identification, wearing the same clothes! At Swindon Crown Court on 17/12/19 he received 2 years detention in a Young Offenders Institution. We have yet to identify the other 3 offenders who entered the property.

WILTSHIRE POLICE

# CPT Area Briefing

Salisbury Area Community Policing Team



Proud to serve and protect our communities

January/February 2020

## Vulnerable Rough Sleeper:

Concerns were raised for the welfare of a vulnerable rough sleeper who has lived within the city for several years. Although previous engagement efforts had been met with resistance from the individual, it was evident that her health had deteriorated and that she was at risk of death or serious injury if left on the street during Winter. A multi-agency high risk behaviour meeting considered all the factors resulting in her admission to hospital against her consent and is now in a specialist placement that can support her needs.

**Graffiti:** Salisbury CCTV captured excellent images of youths graffitiing in the City earlier in 2019. Following circulating the images on social media, the parents of two youths brought them to the Police Station where they were interviewed and made a full admission. As a Community Resolution, they were brought back to the City under the supervision of a City Ranger and Police, where they assisted with cleaning graffiti from a shop window near the Poultry Cross. Although they were not responsible for all of this graffiti their remorse and willingness to do something positive is a better outcome than to have instantly criminalised the offenders.



## Reward & Recognition:

- **PCC Volunteer of the Year - Police Cadet Andrew Foord.** Andrew has been a Cadet since 2016 and received his award for creating 2 videos aimed at the youth audience surrounding Knife Crime and County Line Drug Dealing.
- **Daniel Cooper Memorial Award for Outstanding Service to Members of the Public – Police Constable James Barrett.** James was recognised for his commitment to Policing in Salisbury, with particular mention towards rural crime, an investigation into an organised crime group and leading a national hunt and capture of a particularly violent burglar. He is commended for the high standards he sets and delivering exceptional levels of service to Wiltshire Police and the Communities he serves. James joins our Neighbourhood CPT in January.

WILTSHIRE POLICE

# CPT Area Briefing

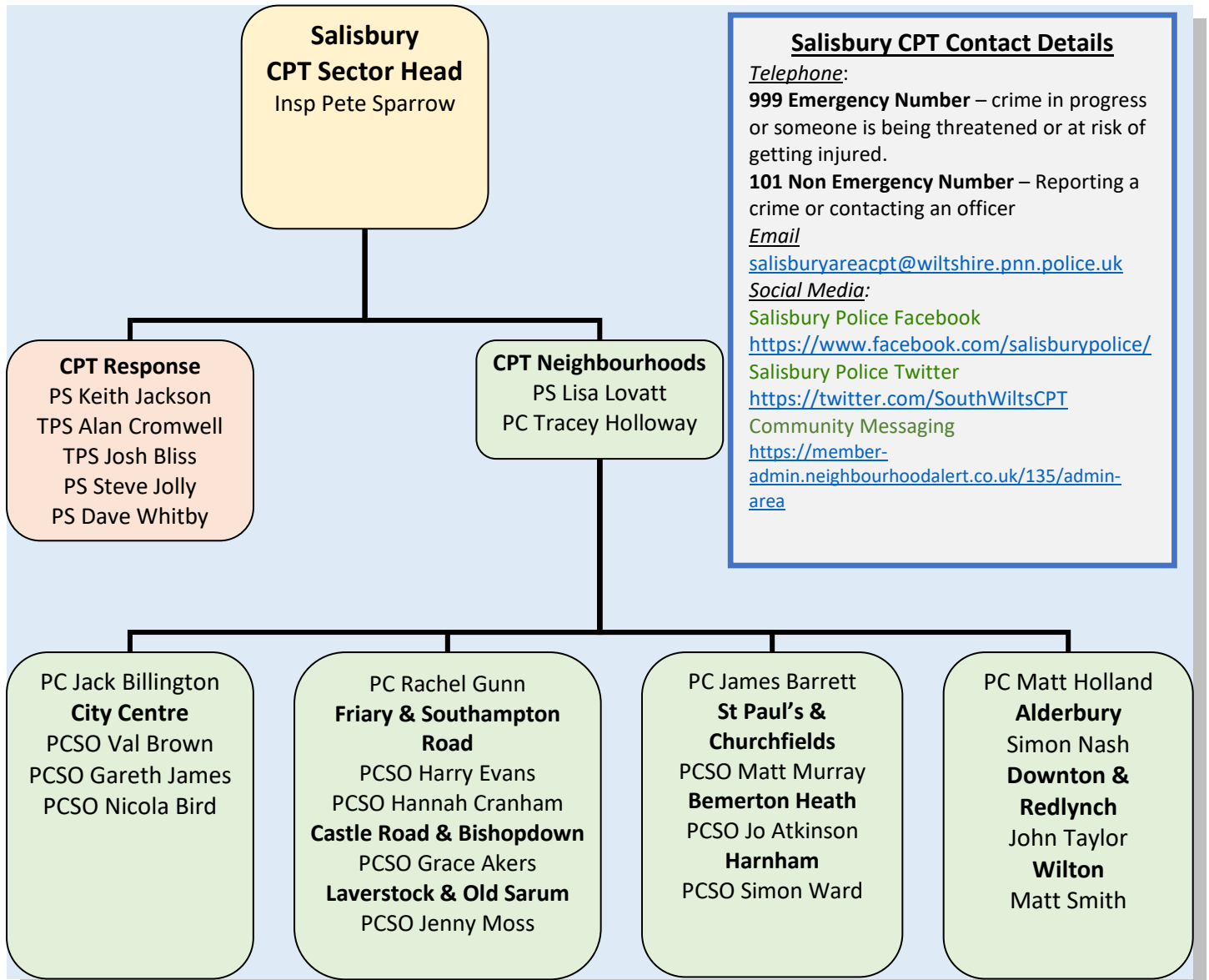
Salisbury Area Community Policing Team



Proud to serve and protect our communities

January/February 2020

## Salisbury Community Policing Team



**Salisbury CPT Contact Details**

*Telephone:*  
**999 Emergency Number** – crime in progress or someone is being threatened or at risk of getting injured.  
**101 Non Emergency Number** – Reporting a crime or contacting an officer

*Email*  
[salisburyareacpt@wiltshire.pnn.police.uk](mailto:salisburyareacpt@wiltshire.pnn.police.uk)

*Social Media:*  
 Salisbury Police Facebook  
<https://www.facebook.com/salisburypolice/>  
 Salisbury Police Twitter  
<https://twitter.com/SouthWiltsCPT>  
 Community Messaging  
<https://member-admin.neighbourhoodalert.co.uk/135/admin-area>

**Visibility & Engagement:** If you wish for Police to attend an event or meeting, please contact us with your specific request by email and we will try to attend.

You can find out more about Wiltshire South CPT, including news stories and contacts for local officers, on our website: [www.wiltshire.police.uk/WiltshireSouth](http://www.wiltshire.police.uk/WiltshireSouth)

WILTSHIRE POLICE

# CPT Area Briefing

Salisbury Area Community Policing Team



Proud to serve and protect our communities

January/February 2020

## LOCAL PRIORITIES

PRIORITIES FOR SALISBURY CPT	Comments
<b>Priority 1: Burglary Business</b>	
To address the rise in Business Burglary offences across the area.	Review crime series to establish patterns and investigative opportunities
<b>Priority 2: Op Hamper or Op Vendor</b>	
Continue our efforts to address the ASB and Thefts within the City in Partnership with ShopWatch and PubWatch making best use of our CCTV resources.	High Visibility Patrols: Deny Space for Criminals Detect Offences at the time Deter Offenders
<b>Priority 3: Rural Crime &amp; Hare Coursing</b>	
OP Artemis. This operation links actions and resources from Wiltshire Police, Rural Crime Partnership and FarmWatch. Pro-Active and high visibility patrols are being conducted across the Rural areas in support of this priority.	PCSO Matt Smith has just completed his drone training, which we hope will assist with future rural operations.
<b>Priority 4: Community SpeedWatch</b>	
All Neighbourhood Officers are to take visible ownership of their beat area and work with their communities to identify and reduce demand.	Support of our volunteer CSW Teams in assisting keeping our road network safer by tackling speeding issues.
<b>Priority 5: Reduce Demand through Problem Solving initiatives</b>	
All Neighbourhood & Response Officers are to take visible ownership of their beat area and work with their communities to identify and reduce demand.	How Can I prevent anyone from having to return to this? Identify owners for repeat offenders.

WILTSHIRE POLICE

# CPT Area Briefing

Salisbury Area Community Policing Team



Proud to serve and protect our communities

January/February 2020

## HIGH LEVEL PCC UPDATES

- **Precept Consultation** – From 6 January, I will be consulting with residents and businesses in Wiltshire and Swindon on what they would be prepared to pay as part of their council tax bill next year's towards local policing. I am still waiting for notification from the Home Office on what our settlement will be in Wiltshire for 2020/21 and hope to be in receipt of this soon. I strongly encourage you to [submit your feedback on my website](#).

## HIGH LEVEL FORCE UPDATES

- We continue to implement **changes in our community policing teams** to better meet demand in our different patches. It is a phased approach and as of December the boundaries of our community policing teams changed with their names also changing to reflect the areas covered.

**The new list is:** Swindon Area CPT, Chippenham Area CPT, Royal Wootton Bassett Area CPT, Trowbridge Area CPT, Warminster Area CPT, Salisbury Area CPT, Devizes Area CPT and Amesbury Area CPT.

- **Changes to 101 system** – In mid-December the options available when members of the public call 101 have changed to allow for to be connected directly to some departments. They will also no longer be taking reports of shoplifting unless it is in progress, an offender is detained or there was violence to any members of the public or staff. Instead callers are encouraged to report the crime online and submit any available CCTV.

## GET INVOLVED

- You can keep up to date with the latest news in your area by signing up to our Community Messaging service – [www.wiltsmessaging.co.uk](http://www.wiltsmessaging.co.uk)
- You can follow your CPT on social media

<https://www.wiltshire.police.uk/Followus>

- More information on your CPT area can be found here: [www.wiltshire.police.uk](http://www.wiltshire.police.uk) and here [www.wiltshire-pcc.gov.uk](http://www.wiltshire-pcc.gov.uk)



WILTSHIRE POLICE

## CPT Area Briefing

Salisbury Area Community Policing Team



Proud to serve and protect our communities

January/February 2020

## Beat Area Updates

Area Board	Beat Area	PC	PCSO	Community Engagement & What are we Focusing on?
Salisbury	City Centre (ES11)	Jack Billington	Val Brown, Gareth James & Nicola Bird	We will be implementing Operation Vendor, which will build on the success of Operation Hamper and continue to reduce reports of ASB and Shoplifting. We will also be developing a strategy to reduce violent crime relating to the night time economy.
	Bemerton Heath (ES15)	James Barrett	Jo Atkinson	Our focus will be on road safety, particularly speeding vehicles and cycles with no lights. We will also be reviewing the possession and supply of drugs on the beat area.
	St Pauls & Churchfields (ES16)		Matt Murray	We are working on Op Vantor shoplifting offences with the shops on Churchill Way West Retail Park and the new Tesco Express on Wilton Road with some identified repeat offenders.
	Harnham (ES17)		Simon Ward	We will be focusing on addresses that create the most demand, alongside visibility and engagement.
	Friary & Southampton Road (ES12)	Rachel Gunn	Harry Evans & Hannah Cranham	Vulnerability checks in line with closure orders applied to protect addresses at risk of county lines activity and ongoing work in support of Op Vendor.
	Castle Road & Bishopdown (ES14)		Grace Akers	The focus will be on crime prevention work with our churches and ASB issues concerning a couple of addresses where high demand has been identified.
Southern Wiltshire	Old Sarum & Laverstock (EU11 part)	Matt Holland	Jenny Moss	School engagement in Laverstock and some wider ASB issues on the Longhedge Estate as the new community integrates.
	Alderbury (EU11 part)		Simon Nash	We are working towards some crime prevention advice to help target harden the area. This will particularly focus on theft and burglary offences.
	Downton & Redlynch (EU12)		John Taylor	Continued partnership work to address specific youth ASB issues. Education regarding catapult offending and speeding motorist.
South West Wilts	Wilton Town & Rural (EW11&12)		Matt Smith	We will focus on Poaching/hare coursing in the rural areas alongside visibility in the Town. Engagement sessions: Cattle Market-Tues 04 <sup>th</sup> Feb 0900hrs-1200hrs Wilton Café-Sat 18 <sup>th</sup> Jan 1000hrs-1030hrs

WILTSHIRE POLICE

# CPT Area Briefing

Salisbury Area Community Policing Team



**Proud** to serve and **protect** our communities

January/February 2020